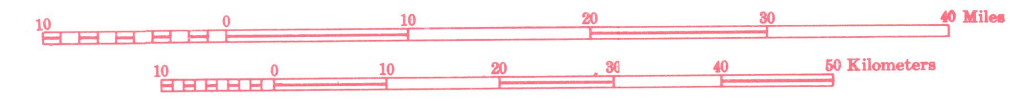


U.S. DEPARTMENT OF COMMERCE
 NATIONAL OCEANIC AND ATMOSPHERIC ADMINISTRATION
 NATIONAL OCEAN SERVICE
 WASHINGTON, D.C.

INDEX MAP - CONTROL LEVELING
STATE OF MICHIGAN
 (NORTHERN SECTION)

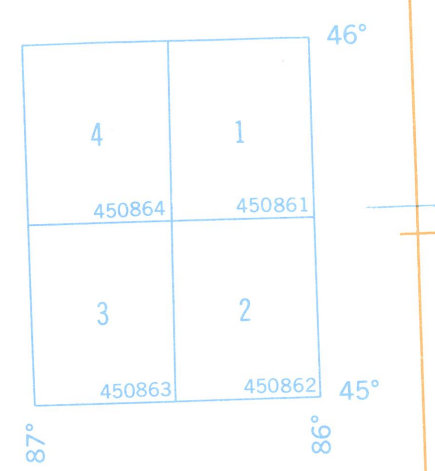


February 1984

- First-Order Lines
- - - Second-Order Lines

Information may be obtained from the
 Chief, National Oceanic Information Center,
 National Ocean Service, NOAA, Rockville, MD 20852

Note:
 Data may be requested by quadrangle.
 Publication of data in quadrangle units is
 complete for this State.



Each 30 minute quadrangle (shown in blue)
 is identified in the southeast corner by a six
 digit number showing successively degrees of
 latitude, degrees of longitude, and position in
 its one degree quadrangle.